



FEL CARRY CAN

Mobile Refuse Cart Lifter

Maximizing Route Safety & Efficiency

Bayne Thinline Premium Lift Systems. Lifting Ergonomics To New Heights.

Bayne offers a full line of patented FEL Carry Cans to fit all OEM truck models. In addition to the patented Bayne® Thinline® rack-and-pinion rotary actuator, Bayne also holds a patent on the combination of a cart lifter with an FEL Carry Can. This allows the hauler to operate one truck for both residential and commercial routes, resulting in a reduction of total fleet cost. The FEL Carry Can has a 3-cubic-yard capacity for fewer dump cycles, and can have cart lifters mounted on the curb side and/or front of the carry can. FEL Carry Cans are constructed of 12-gauge steel for durability.

FEL Carry Can Features:

- Compatible with BTL-208 and TL-1120 cart lifters
- FEL Carry Can PN #1910-0009 features a BTL-208 lifter and is for units without Curotto-Can® hookups
- FEL Carry Can PN #1910-0020 features a BTL-208 lifter and is for units with Curotto-Can hookups
- FEL Carry Can PN #1910-0004 features a TL-1120 lifter that is mounted on the front of the Carry Can
- FEL Carry Can PN #1910-0025 features dual TL-1120 lifters that are mounted on the front of the Carry Can
- Compatible with both semi-automated and fully automated roll-out carts
- Designed to provide close access to containers on the curb
- Quick disconnect fittings allow for easy removal of the carry can when changing from residential to commercial routes
- Places cart to the center of the carry can when dumping to prevent spillage
- Powder-coated finish for durability
- 2-Year Limited Warranty



Premium Lift Systems

Precision, Quality, and Patented Engineering

For more information: Toll Free: 800-528-5308 | www.baynethinline.com

Bayne Thinline Premium Lift Systems | 4301 Gault Ave. North | Fort Payne, AL 35967

FEL CARRY CAN

Specifications & Dimensions

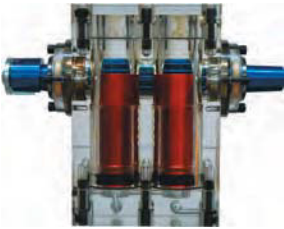
PERFORMANCE SPECIFICATIONS

Cart Compatibility	ANSI Z245.60-2008 Type B Carts (domestic style 2-bar) ANSI Z245.60-2008 Type C Carts (European style) ANSI Z245.60-2008 Type D Carts (pocketed style) ANSI Z245.60-2008 Type G Carts (automated style) Standard size 30 and 55 gallon drums
Lift Capacity	400 lbs. @ 1800 psi
Hydraulic Pressure	3000 psi Maximum (BTL/TL)
Hydraulic Flow	2.0 - 2.5 gpm
Cycle Time	6 - 8 seconds (BTL/TL)
Bearings	Self-Lubricating Composite Material
Actuator	Patented Bayne® Thinline® rack-and-pinion rotary actuator
Finish	Safety yellow powder-coating
Options	Tap-in Kit

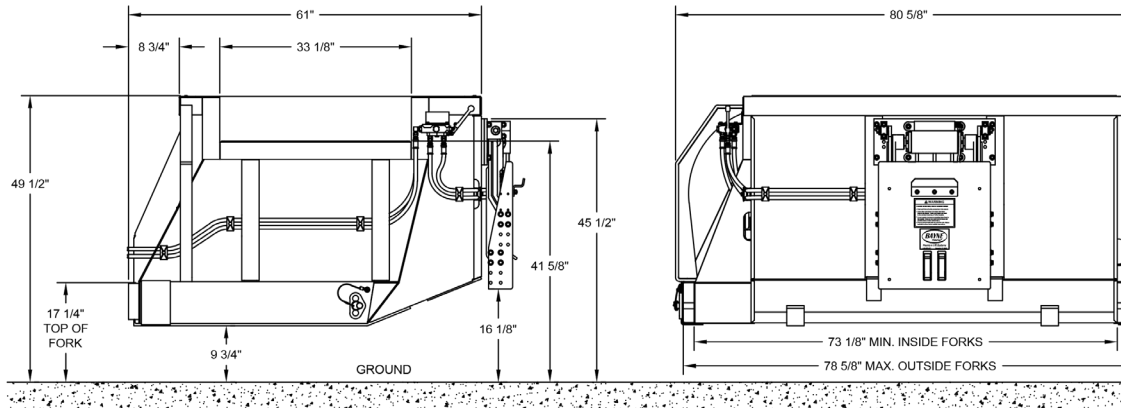


Product shown with BTL-208 lifter

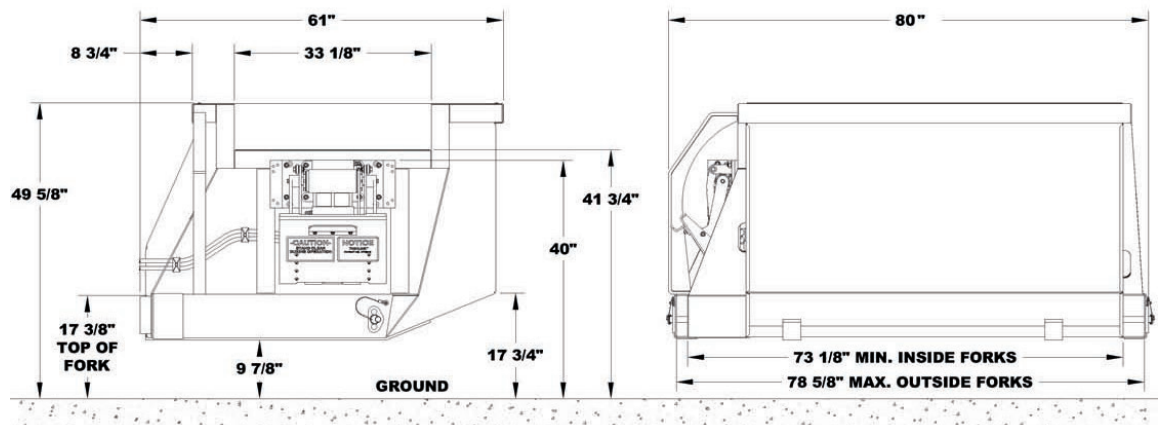
1910-0004 and 1910-0025 Dimensions (Please note: 0025 has a second TL-1120 lifter)



Patented Bayne Thinline
Rack-and-Pinion Rotary
Actuator



1910-0009 and 1910-0020 Dimensions



Pictures and mechanical diagrams in this literature are illustrative only and may not be to scale. Specifications are subject to change without notice in order to accommodate improvements to the equipment. Data published herein is for information purposes only and shall not be construed to warrant suitability of the unit for any particular purpose, as performance may vary with the conditions encountered. The only warranty is our standard written Warranty Statement for this product at the time of shipment.



Premium Lift Systems

Toll Free: 800-528-5308 | www.baynethinline.com

Bayne Thinline Premium Lift Systems | 4301 Gault Ave. North | Fort Payne, AL 35967

© Copyright 2024 Bayne Thinline All rights reserved

