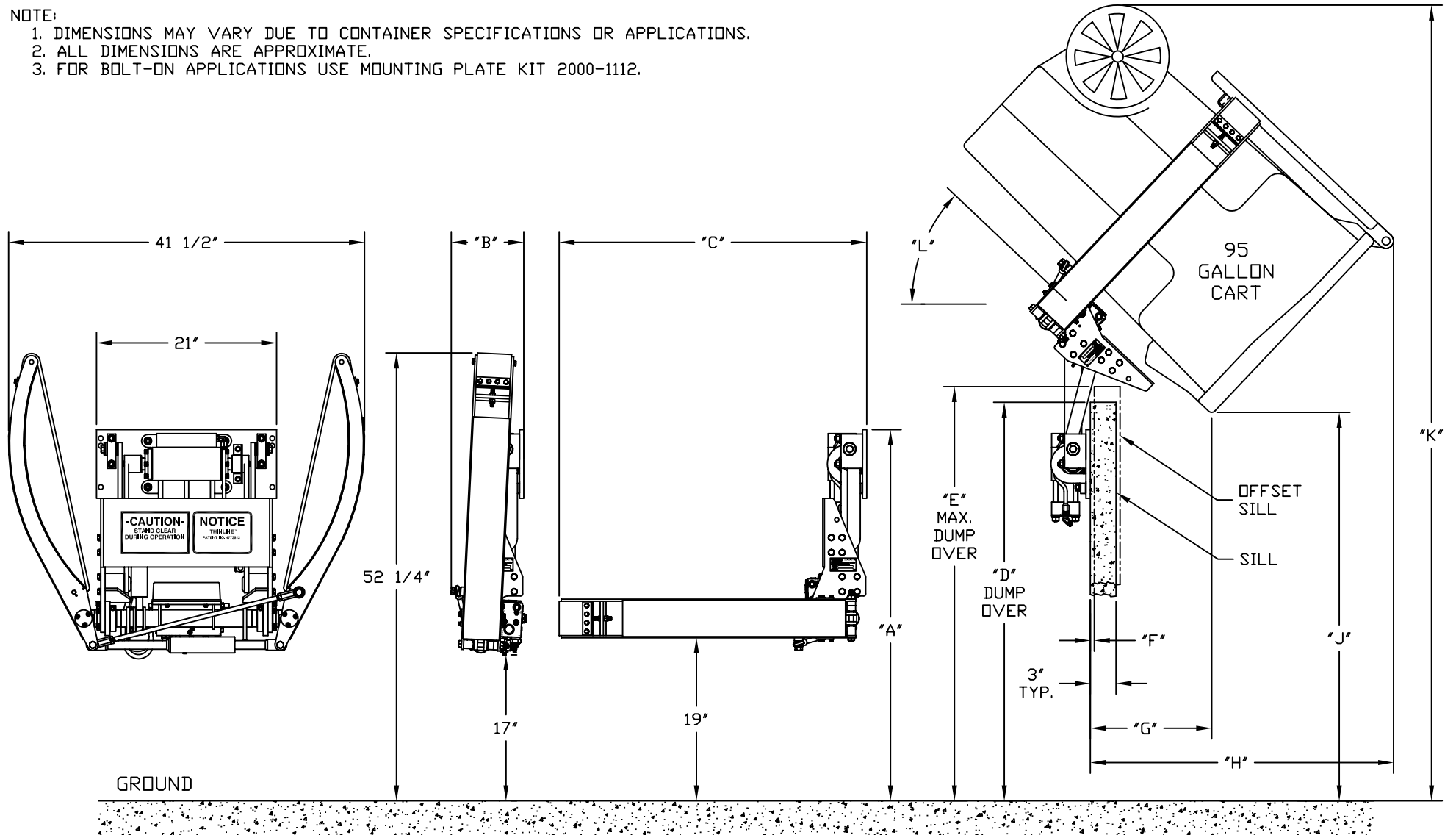


NOTE:

1. DIMENSIONS MAY VARY DUE TO CONTAINER SPECIFICATIONS OR APPLICATIONS.
2. ALL DIMENSIONS ARE APPROXIMATE.
3. FOR BOLT-ON APPLICATIONS USE MOUNTING PLATE KIT 2000-1112.



CONFIDENTIAL

This drawing is private and confidential communication and the property of BAYNE MACHINE WORKS, INC., Greenville, S.C. It MUST NOT be copied or lent without consent of BAYNE MACHINE WORKS, INC., and must be promptly returned with tender and/or completion of order to the purchasing department.

SCALE: NONE

SHEET 1 OF 2

REV. -

BAYNE MACHINE WORKS, INC.
910 FORK SHOALS ROAD - GREENVILLE, SC 29605 - 864.288.3877

TOLERANCES IF NOT NOTED:
0.000 ±0.005 - 0.00 ±0.015
0/0 ±1/32 - ANGULAR ±0.25°

DRAWN BY: CTT

DATE: 06/24/04

CHK'D BY:

DATE:

TITLE: GTL SERIES SPECIFICATIONS

DWG. NO.: H5400003

MODEL NUMBER	PART #	"A" DIM.	"B" DIM.	"C" DIM.	"D" DIM.	"E" DIM.	"F" DIM.	"G" DIM.	"H" DIM.	"J" DIM.	"K" DIM.	"L" DIM.
GTL 1110	1900-0510	39 1/4"	8 1/2"	35 7/8"	40"	40 1/4"	1/8"	14 1/4"	35 1/4"	37 3/8"	84 3/4"	43°
GTL 1110 F.L.B.	1900-0500											
GTL 1111	1900-0511	40 1/4"	8 1/2"	35 7/8"	41 1/2"	42 3/8"	3/8"	14 3/8"	34 7/8"	39 7/8"	86 7/8"	41°
GTL 1112	1900-0512	41 1/4"	8 1/2"	35 7/8"	42 7/8"	44 1/2"	1/2"	14 5/8"	34 5/8"	42 1/4"	89"	40°
GTL 1113	1900-0513	42 1/4"	8 1/2"	35 7/8"	44 3/8"	46 5/8"	5/8"	14 3/4"	34 1/4"	44 5/8"	91"	39°
GTL 1114	1900-0514	43 1/4"	8 1/2"	35 7/8"	45 3/4"	48"	5/8"	14 1/8"	35 3/8"	45 1/4"	92 3/4"	43°
GTL 1114	1900-0504											
GTL 1115	1900-0515	44 1/4"	8 1/2"	35 7/8"	47 1/4"	50 3/4"	7/8"	14 7/8"	33 3/4"	49 1/8"	95 1/8"	37°
GTL 1120	1900-0520	49 1/4"	8 1/2"	35 7/8"	54 3/8"	59 5/8"	7/8"	13 7/8"	35 7/8"	56 5/8"	104 1/2"	46°

CONFIDENTIAL

This drawing is private and confidential communication and the property of BAYNE MACHINE WORKS, INC., Greenville, S.C. It MUST NOT be copied or lent without consent of BAYNE MACHINE WORKS, INC., and must be promptly returned with tender and/or completion of order to the purchasing department.

SCALE:
NONE

SHEET OF
2 2

REV.
-

BAYNE MACHINE WORKS, INC.
910 FORK SHOALS ROAD - GREENVILLE, SC 29605 - 864.288.3877

TOLERANCES IF NOT NOTED:
0.000 ±0.005 - 0.00 ±0.015
0/0 ±1/32 - ANGULAR ±0.25°

DRAWN BY:
CTT

DATE:
06/24/04

CHK'D BY:

DATE:

TITLE: GTL SERIES
SPECIFICATIONS

DWG. NO.:
H5400003